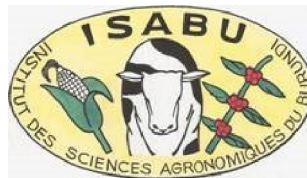


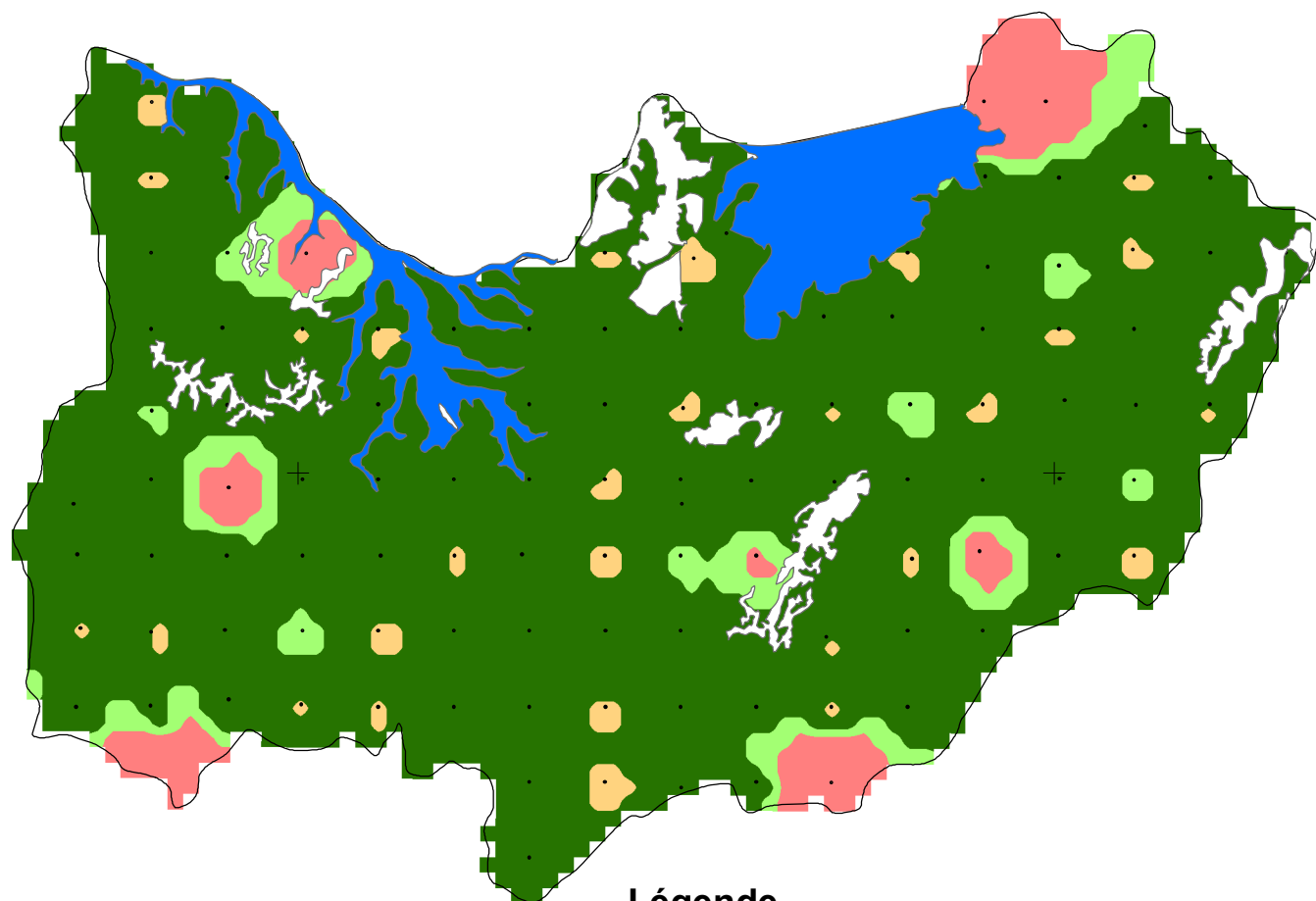
REPUBLIQUE DU BURUNDI





MINISTRE DE L'ENVIRONNEMENT, DE  
L'AGRICULTURE ET DE L'ELEVAGE







## RAPPORT Mg/K DES SOLS DES DEPRESSIONS DU NORD



### Légende

-  Boisements et aires protégées du Nord
-  Points échantillonnés des dépressions du Nord

### Rapport Mg/K

-  <2,2: Carence en Mg
-  2,2-12,0: Optimal
-  12,0-20,0: Acceptable
-  >20,0: Carence en K

0 5 10 20 km



Production: Janvier 2022