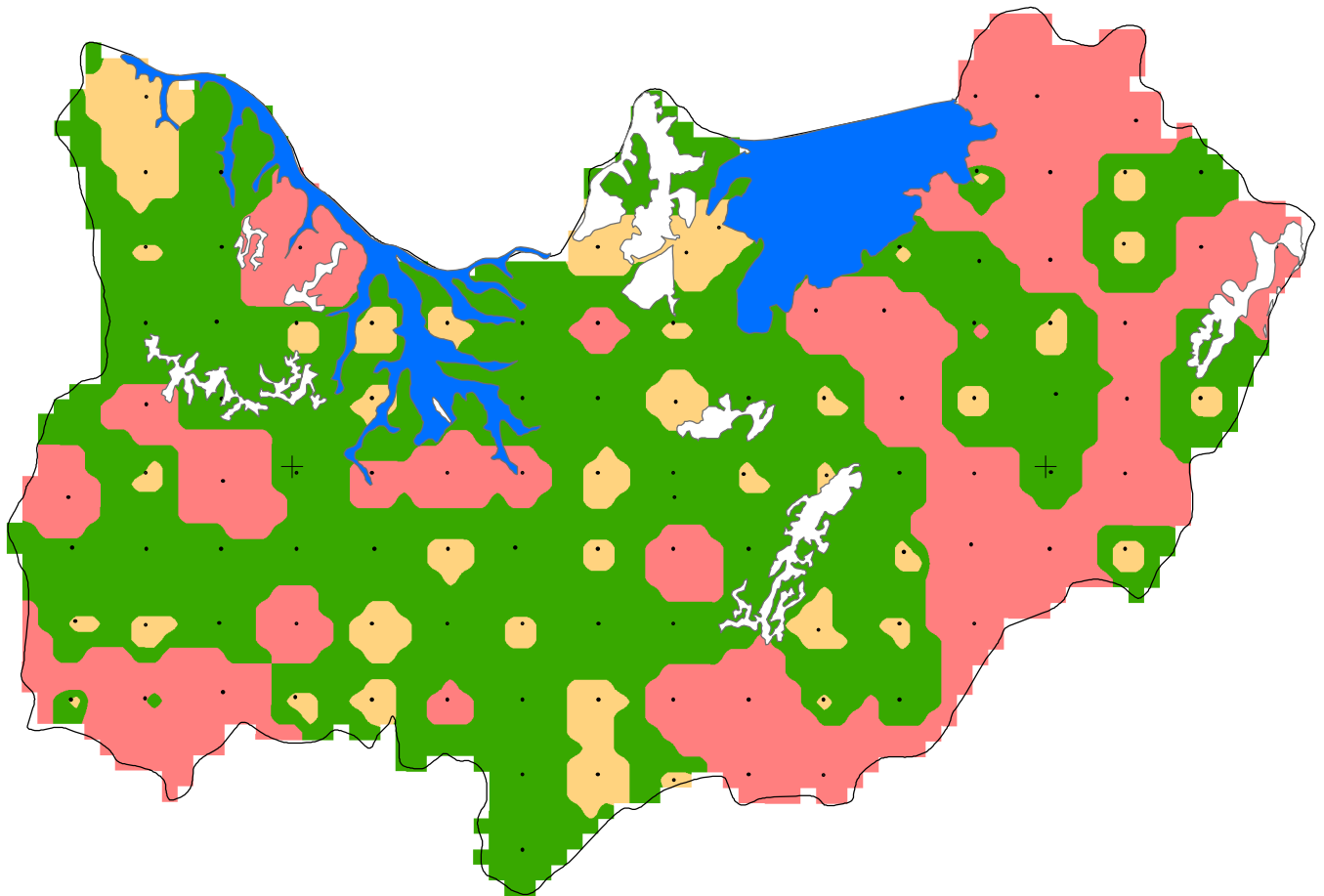




REPUBLIQUE DU BURUNDI


 MINISTRE DE L'ENVIRONNEMENT, DE
L'AGRICULTURE ET DE L'ELEVAGE





RAPPORT $(Ca+Mg)/K$ DES SOLS DES DEPRESSIONS DU NORD



Légende

-  Boisements et aires protégées du Nord
-  Points échantillonnés des dépressions du Nord

Rapport $(Ca+Mg)/K$

-  <12: Carence en Ca+Mg
-  12-30: Optimal
-  >30: Carence en K

0 5 10 20 km



Production: Janvier 2022